

WINPACCS®
SYMPOSIUM 2022

13 SEPT. | WETZLAR | On-site and Online

The WINPACCS interfaces – easy to connect

Martin Bork and Tobias Ebert, mbi GmbH

Agenda

1. WINPACCS and external systems
2. Currently available interfaces
3. WINPACCS Connect – the future interface to ERP
4. Your questions



Martin Bork

Managing Director
mbi GmbH

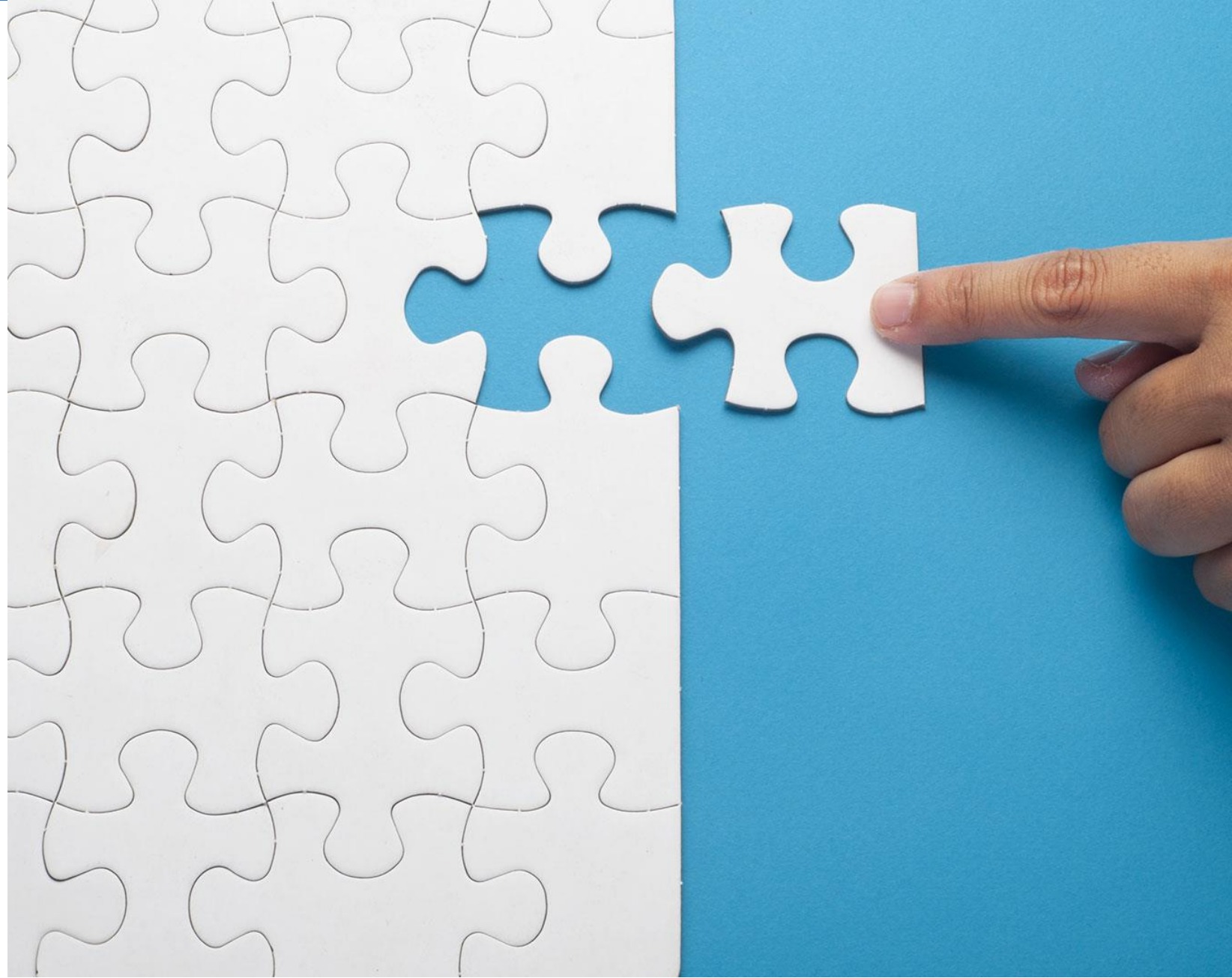


Tobias Ebert

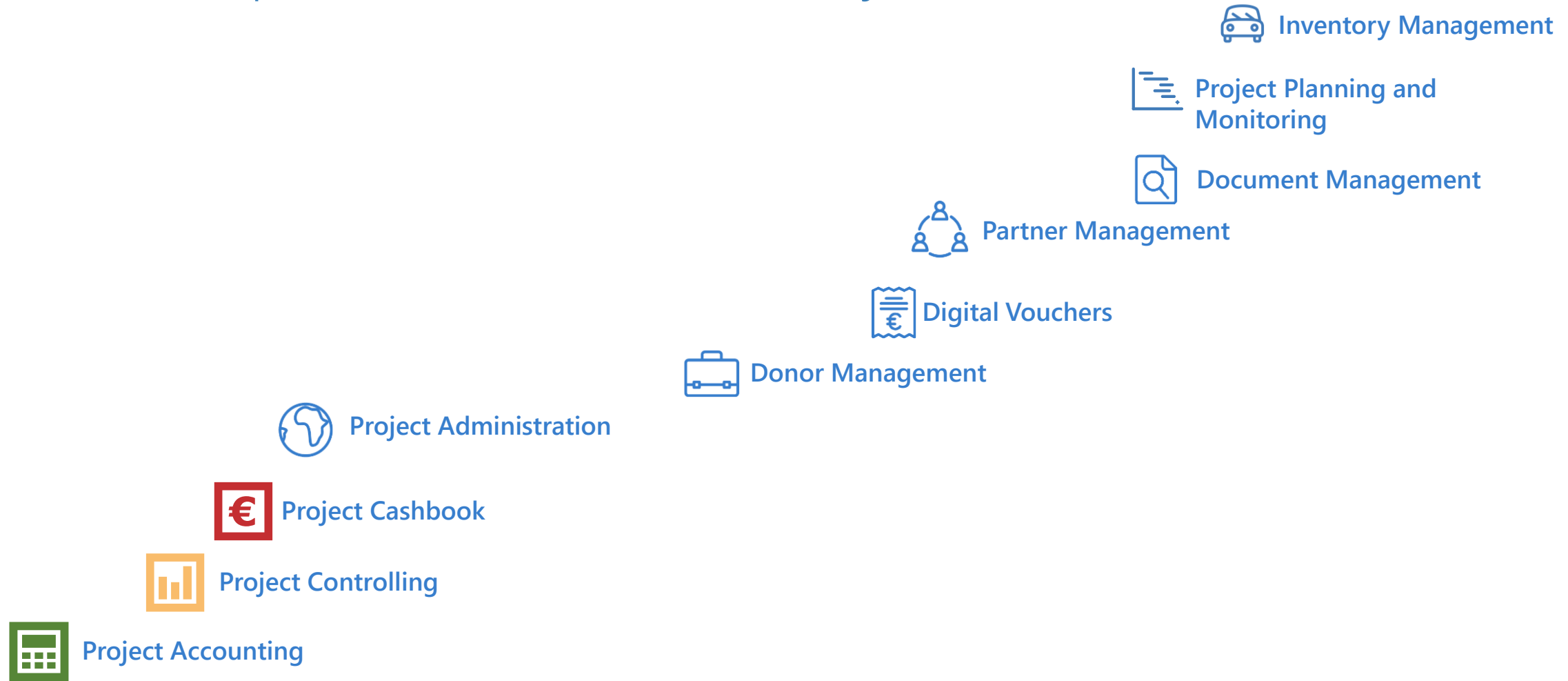
Head of Software Development
mbi GmbH




WINPACCS and external systems




Constant expansion of functionality



WINPACCS goes ERP



Project Accounting




Project Administration




Financial Accounting

new




Partner Management



Donor Management




Project Controlling and Reporting




Project Planning and Monitoring

Controlling

new



Digital Vouchers

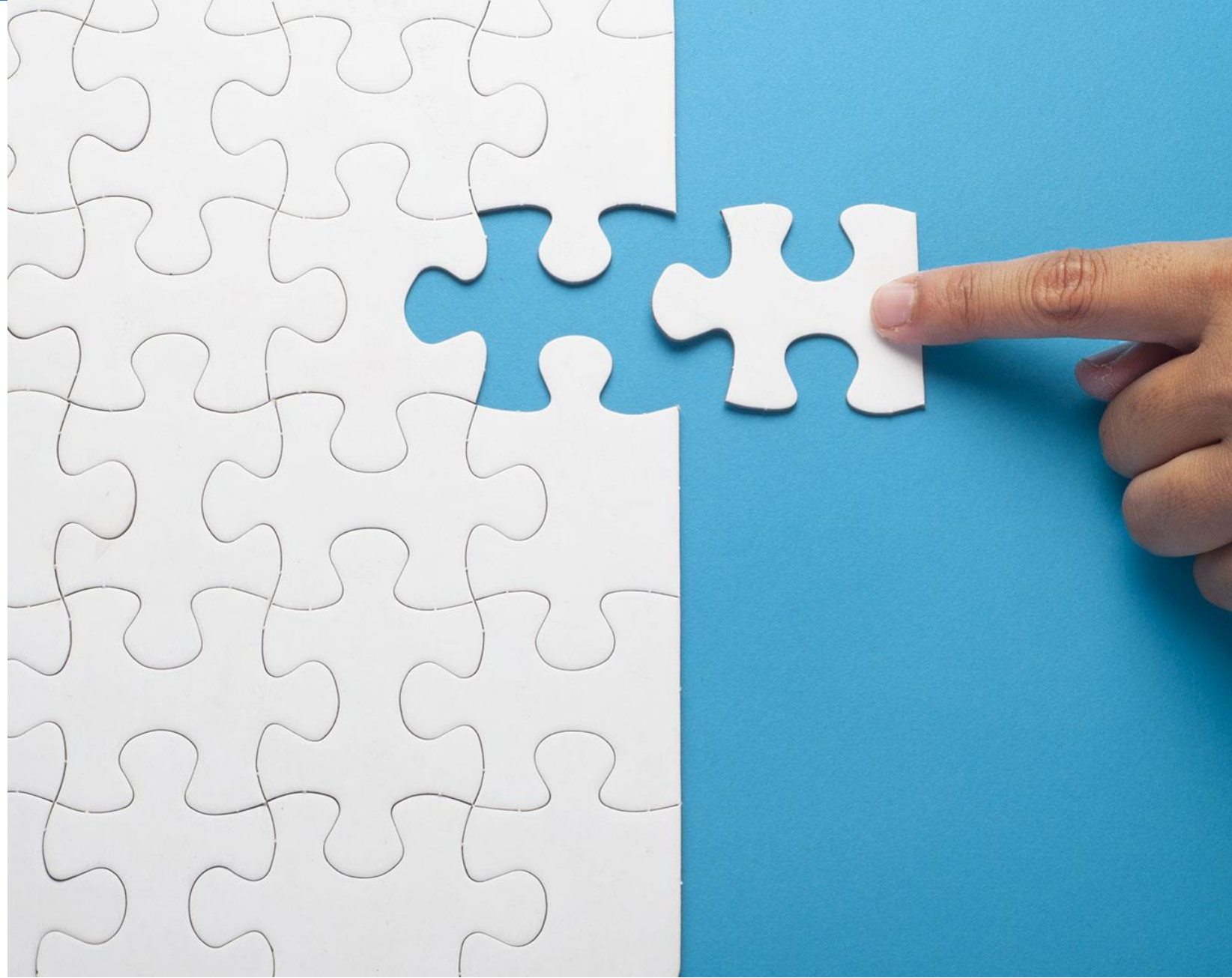


Inventory Management

Reasons for key importance of interfaces

- Many of our customers use an external ERP or other systems and rely on interfaces
- We strive to provide the best solution for our customers
- Machine-to-machine communication is gaining in importance

Currently
available
interfaces



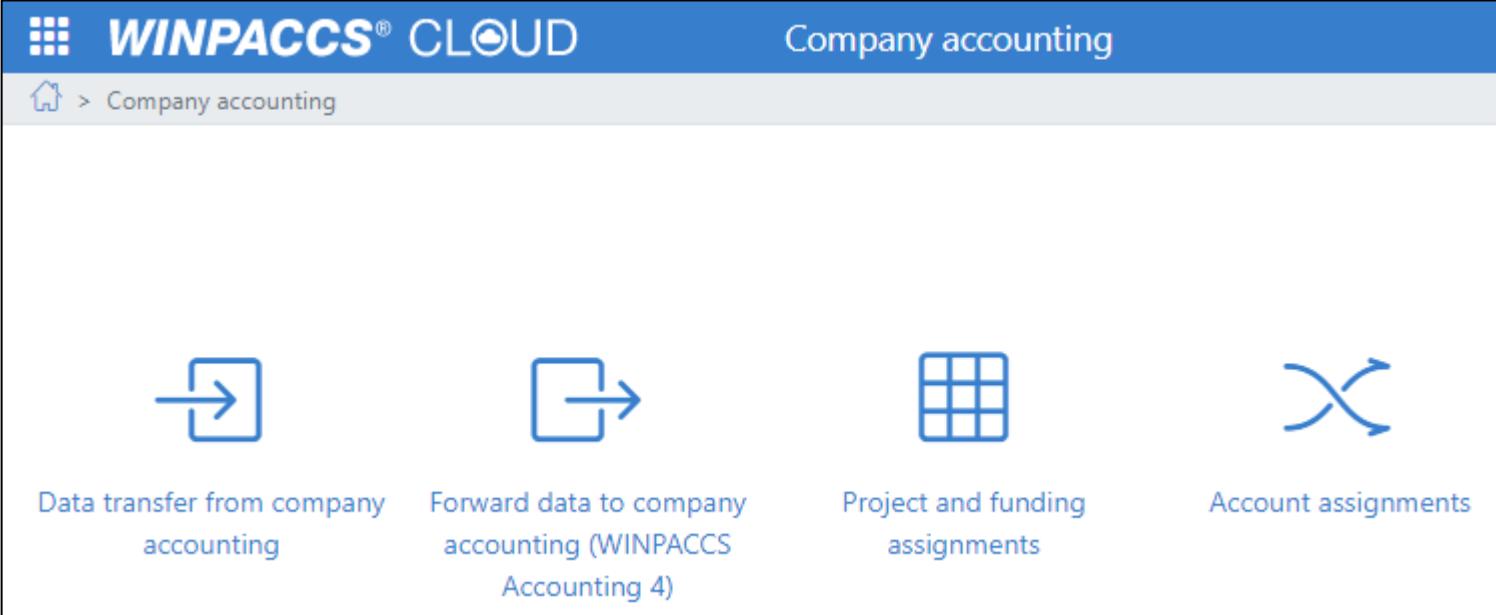
Overview

- File-based interfaces
 - Company accounting
 - Partner accounting
- REST web services
 - Project data
 - Budget structures
 - Voucher data

File-based interfaces: Company accounting

Many company accounting systems support import and export via file-based interfaces.

WINPACCS supports many of these file formats out-of-the-box.



The screenshot shows the WINPACCS CLOUD interface for Company accounting. The header includes the WINPACCS logo and 'CLOUD' text, followed by 'Company accounting'. Below the header, there are four main functional areas represented by icons and text:

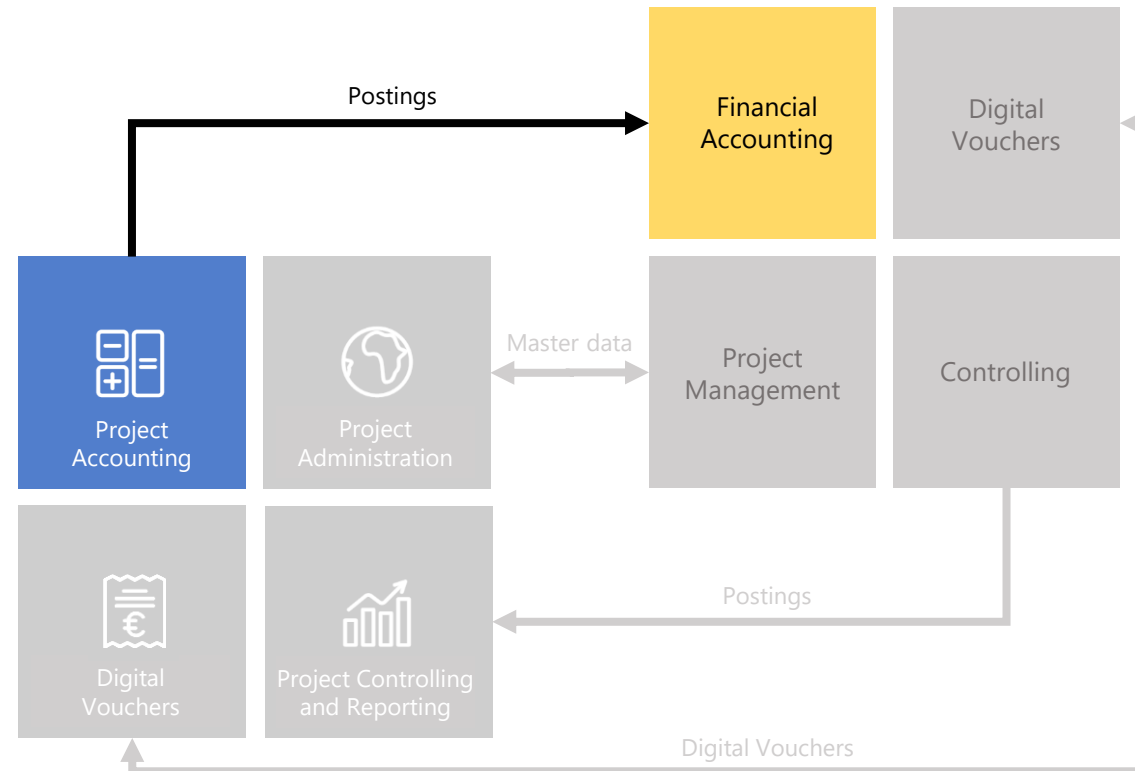
- Data transfer from company accounting**: Represented by an icon of a square with an arrow pointing right.
- Forward data to company accounting (WINPACCS Accounting 4)**: Represented by an icon of a square with an arrow pointing right.
- Project and funding assignments**: Represented by a grid icon.
- Account assignments**: Represented by an icon of two crossed arrows.



Company accounting: Forwarding data to company accounting

Postings from Project accounting are forwarded to Company accounting

WINPACCS®



ERP

Company accounting: Forwarding data to company accounting

Costs only

Only the following posting positions of the Project accounting are forwarded to the Company accounting:

- Costs
- Procurements of assets
- Income
- Local supplies of funds
- Transfers between projects

Company accounting: Forwarding data to company accounting

Closings with the same accounting period can be converted to an import file for the Company accounting.

Company accounting > Forward data to company accounting (WINPACCS Accounting 4) > Unconverted

Navigation < **→ Convert** Display Print Export ▾

Month-end closings Accounting period

Unconverted

Converted

Export files

Open

Posted Company accounting

Discarded

Drag a column header here to group by that column.

<input type="checkbox"/>	Project nu...	Journal nu...	Voucher cur...	Accounti... ▲	First vouch...	Last vouche...
<input checked="" type="checkbox"/>	17.601	002	USD	2022/01	1	5
<input checked="" type="checkbox"/>	17.001	001	EUR	2022/01	1	42
<input checked="" type="checkbox"/>	17.101	002	USD	2022/01	1	32
<input type="checkbox"/>	17.001	001	EUR	2022/02	43	63

1 2 3 4 5 ...

50 ▾ Elements per page 1 - 50 from 285 Elements

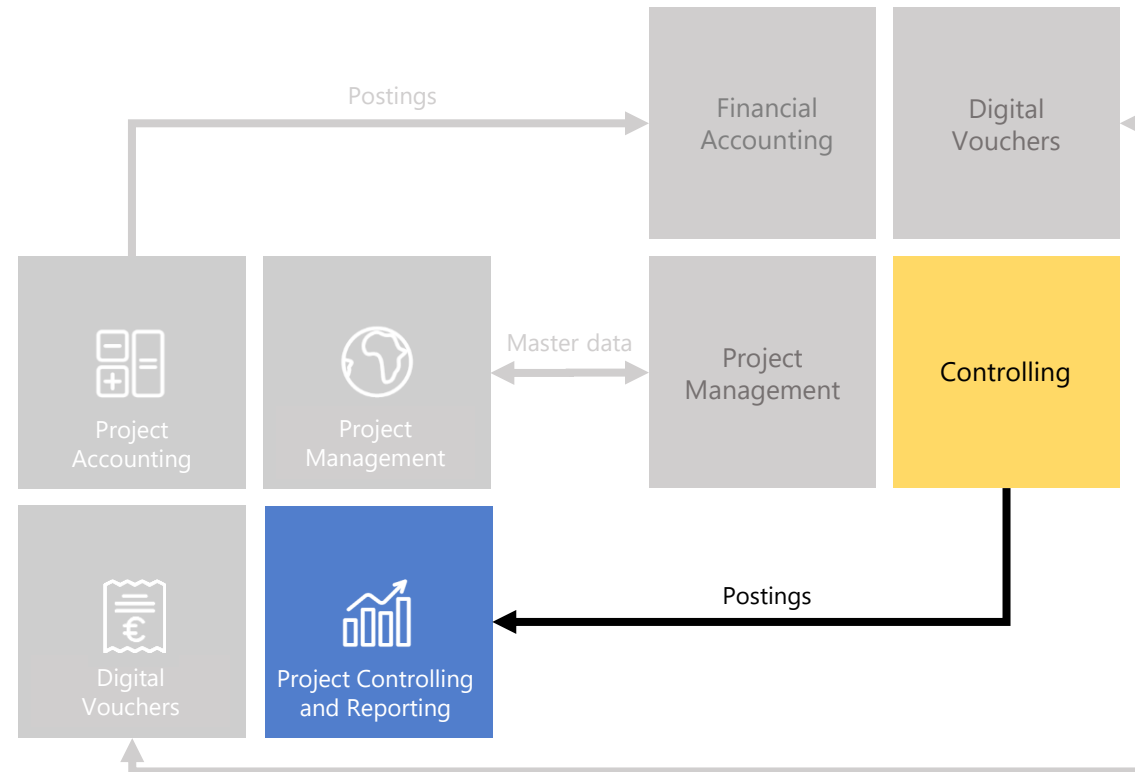
Company accounting: Data transfer from Company accounting

Transfer of project costs in the head office to WINPACCS

- For example personnel costs or travel expenses


WINPACCS[®]


ERP




Company accounting: Data transfer from Company accounting

- Data is exported in Company accounting once a month to an export file.
- This export file is imported into WINPACCS Cloud.
- The data is then available in WINPACCS Project controlling.


 Status: Released



Conversion log



Preview



Voucher number log

Conversion data

File name	DTVF_Buchungsstapel_2021-08.csv
Description	19003
Period	2021/08
Converted on	9/9/2021 3:27 PM

Company accounting data

Project ▲	Journal ▲	Period from ▲	Period to	Vouchers ...	Vouchers to
19.003 Disaster preparedness...	JUB Journal Company accoun...	2021/07	2021/08	3	5

Company accounting: Data transfer from Company accounting

The postings of the Head office can be shown separately in the WINPACCS Project controlling.

Project 17.001		Analysis			Partner <i>in development</i>		
EuropeAid		1.Budget EuropeAid					
	Budget (EUR)	Costs (EUR)	Costs (EUR) Project accounting	Costs (EUR) Company accounting	Residual budget (%)	Status of residual budget	
1 Human Resources	83,290.00	74,231.92	43,805.42	30,426.50	10.88 %	●	
.1 Salaries national staff	17,180.00	16,323.35	16,323.35	0.00	4.99 %	●	
.1 Technical	6,650.00	5,423.51	5,423.51	0.00	18.44 %	●	
.2 Administrative / support staff	10,530.00	10,899.84	10,899.84	0.00	-3.51 %	●	
.2 Salaries international staff	62,140.00	57,041.90	26,615.40	30,426.50	8.20 %	●	
.1 Project coordination and management	33,540.00	35,041.90	26,615.40	8,426.50	-4.48 %	●	
.2 Experts / consultants	28,600.00	22,000.00	0.00	22,000.00	23.08 %	●	

File-based interfaces: Partner accounting



Project billing – Donor reports – Own accounting

Different ways to handle Partner accounting data

For information purposes

Posting of the payment to the partner as cost:

The partner's postings are integrated directly into Project controlling as costs for information purposes.

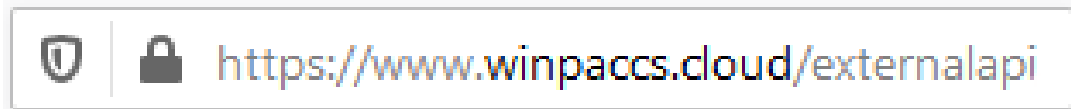
Balance sheet effective

Posting of the payment to the partner as receivable:

The partner's postings are transferred to the Project accounting and offset against the receivables.

REST web services

- Use modern web standards (W3C)
 - HTTP as transport protocol
 - XML and JSON as message format
 - HTTP methods (GET, POST) for actions
- Encrypted with HTTPS (TLS 1.2+) and secure credentials



- Supported by many systems
- Simple connection, tests and usage

REST web services: Project data

All the information of project master data can be transferred through the web service interface.

Selecting a leading system

Some information may be entered in the ERP system, other in WINPACCS. You can choose at field level which system is responsible for the field and if the data in it can be edited in WINPACCS.

Home > Projects > 17.001 Community Health & Rural Development Nepal > Project master data

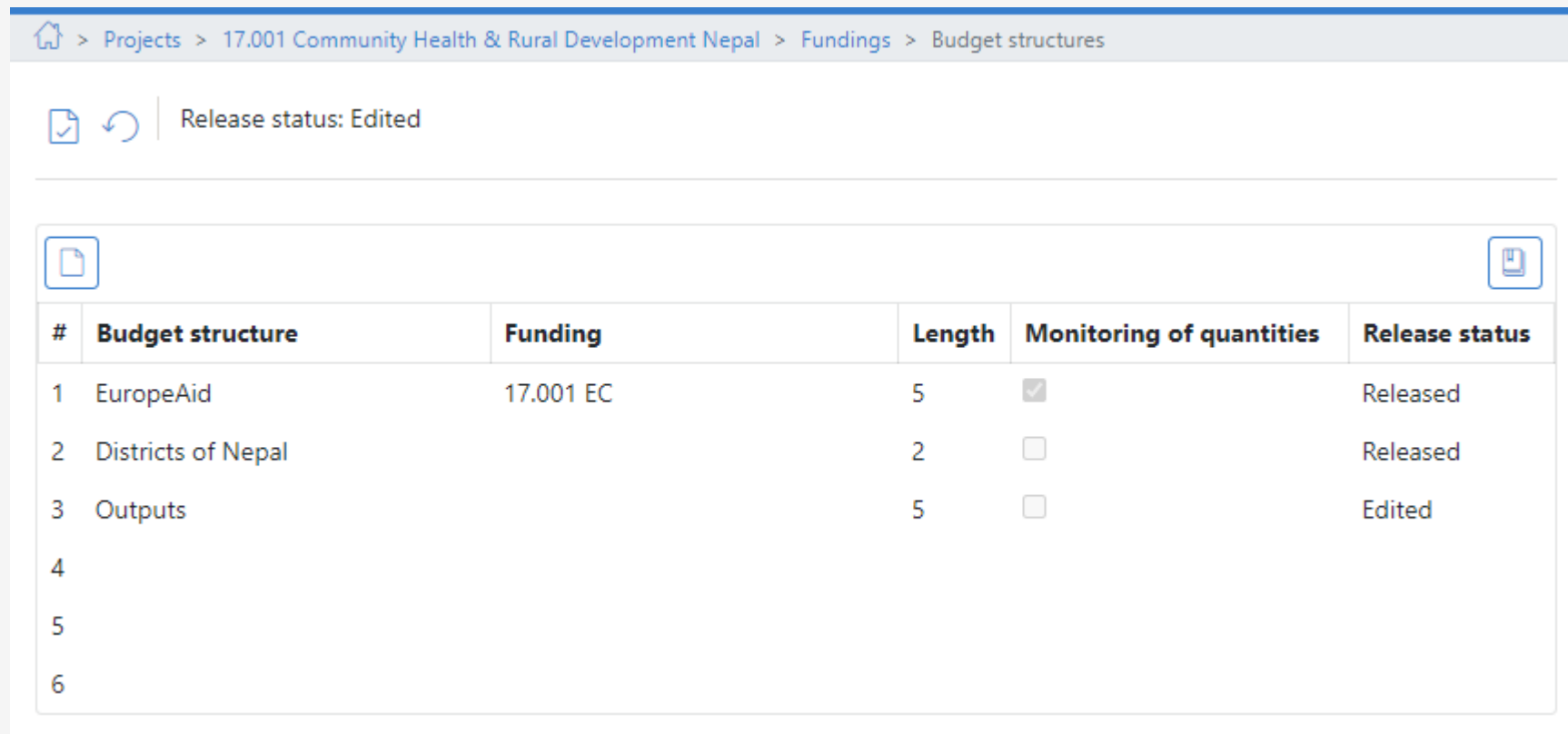
Print

Project master data ?	
Project number	17.001
Project (English)	Community Health & Rural Development Nepal
Project status	active
Project category	Project
Project type	Project
Project without project accounting	<input type="checkbox"/>
Supra-regional	<input type="checkbox"/>
Project country	Nepal
Organisation unit	International Programmes
Project start	7/1/2017
Project end	10/31/2023
Renewal	1/1/2024
Head of project	Tilak Raj Pandey
Project address	Mahalaxmasthan Road, Lalitpur 44700, Kathmandu Nepal
Project goal	The people in Far Western Nepal in the districts Bajura and Mugu, have extended community-based health education and support in conjunction with sustainable rural development.
Brief description	

Project in other languages ?	
Project (German)	Kommunale Gesundheit & Ländliche Entwicklung Nepal
Project (French)	

REST web services: Budget structures

Per project up to six budget structures can be created.



The screenshot shows a web interface for managing budget structures. The breadcrumb navigation is: Home > Projects > 17.001 Community Health & Rural Development Nepal > Fundings > Budget structures. Below the navigation, there are icons for a document and a refresh button, followed by the text "Release status: Edited". A table below displays the budget structures with columns for #, Budget structure, Funding, Length, Monitoring of quantities, and Release status.

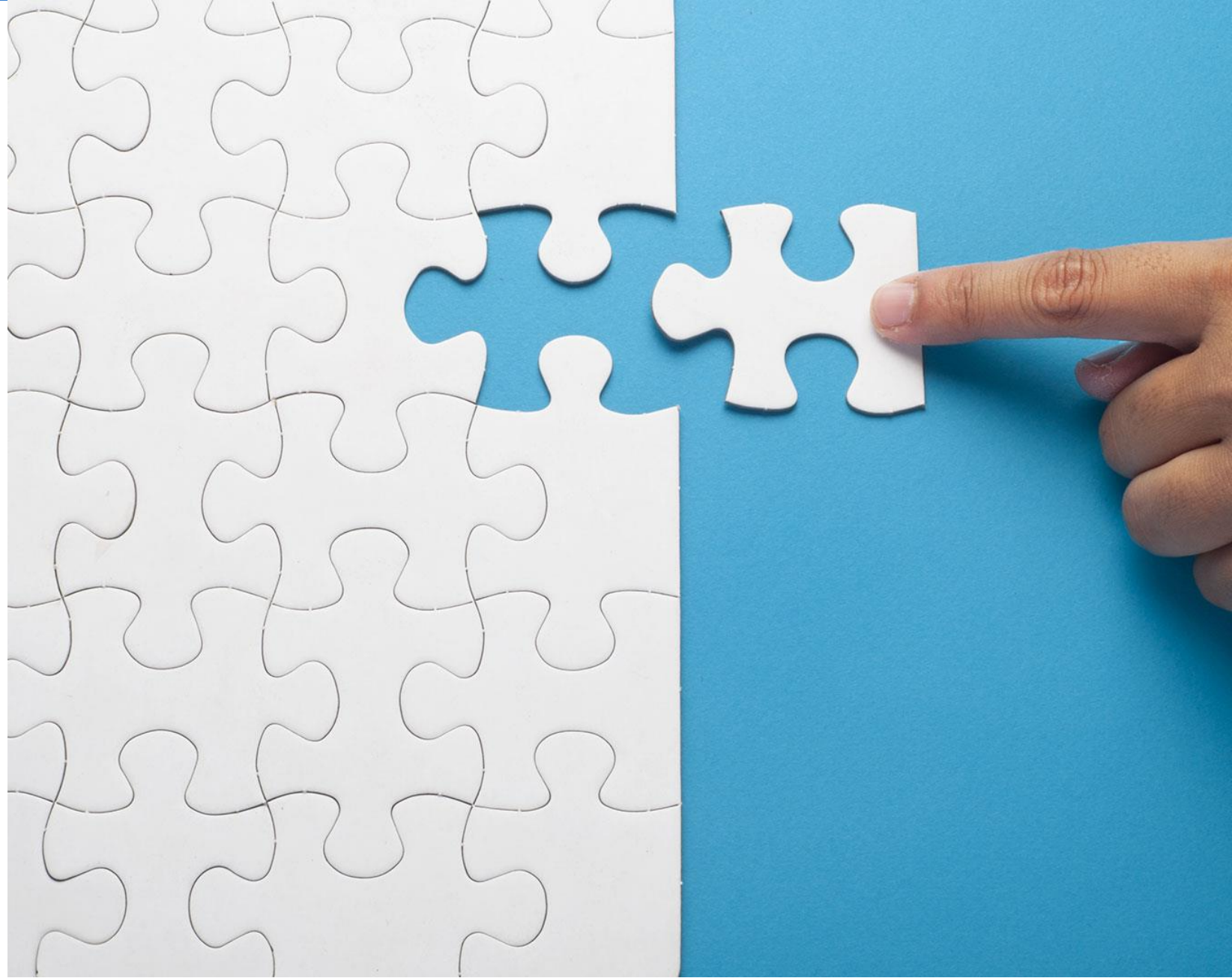
#	Budget structure	Funding	Length	Monitoring of quantities	Release status
1	EuropeAid	17.001 EC	5	<input checked="" type="checkbox"/>	Released
2	Districts of Nepal		2	<input type="checkbox"/>	Released
3	Outputs		5	<input type="checkbox"/>	Edited
4					
5					
6					

REST web services: Voucher data



- giz uses REST web services to transfer voucher data to SAP ERP.
- Closings are posted in SAP about 10 minutes after being uploaded to WINPACCS.
- Every month about 125,000 postings from regional offices and projects are transferred.
- Incorrect postings are rejected and a detailed error log helps the accountants correct them.

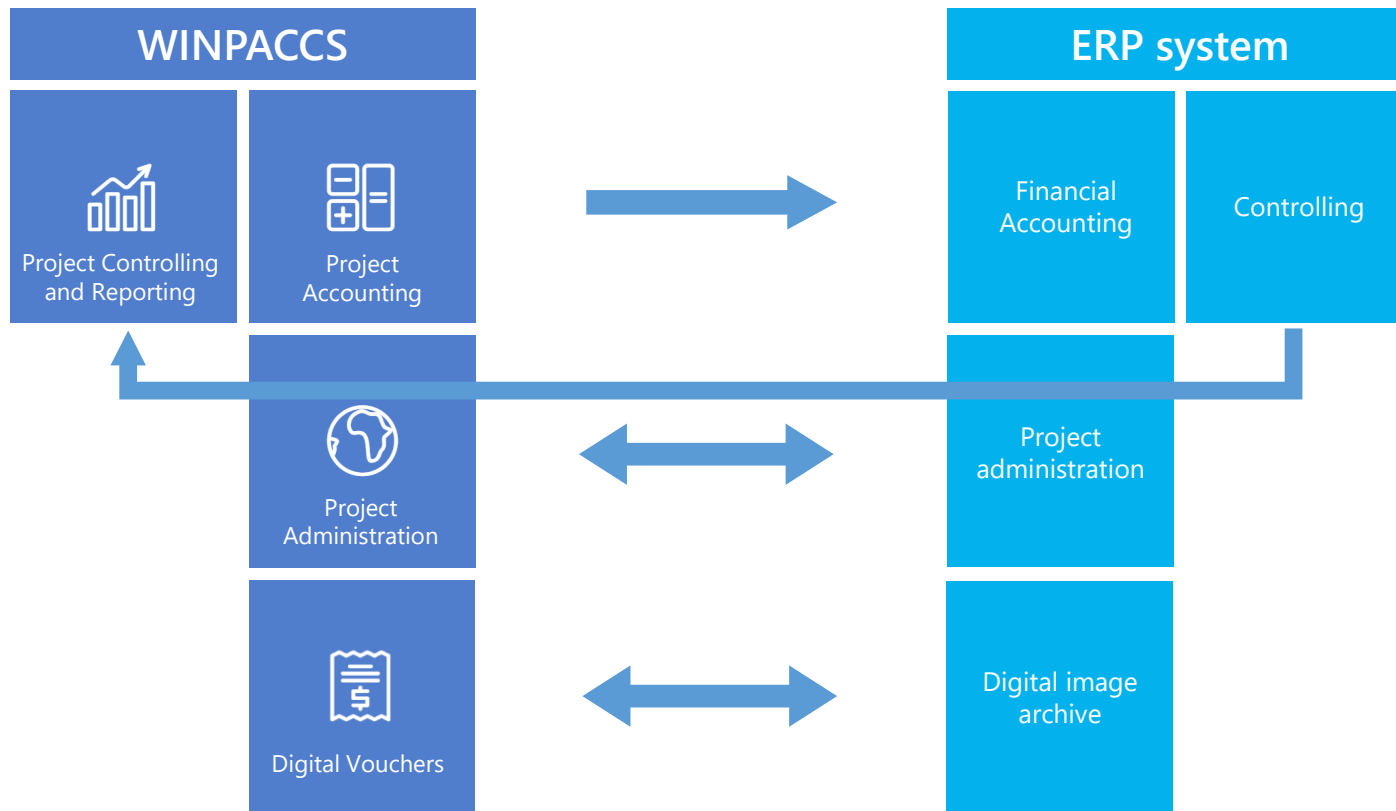
WINPACCS
connect



Disadvantages of the current WINPACCS/ERP interface

- Different „codes“ per customer
- Interfaces are separated from each other – synergy effect is lost
- Manual steps are necessary
- Redundant data storage

WINPACCS connect: Interface to ERP systems



Basic elements „WINPACCS connect“

- High degree of standardisation
- High degree of automation
- Extensive configuration options
- Integrated user interface in WINPACCS
- Automated posting for the ERP system
- Based on the latest technology

Advantages WINPACCS connect

- Setting up the interface for the first time will be easier
- Valuable additional information can be integrated
- Faster and less complicated updates /Technical progress
- Data exchange in real time possible

Any questions?